

XTRABRIGHT® EL-SPS

Edge-lit Retrofit Kit

This energy efficient kit creates a brighter and safer sign that lasts at least 10 years, with no maintenance, to yield full payback in approximately 18 months. The T-1® cold cathode light source in the Xtrabright® EL-SPS eliminates problems commonly created by hot F8T5 fluorescent lamps, such as burned out circuit boards.



Xtrabright® EL-SPS

Safer

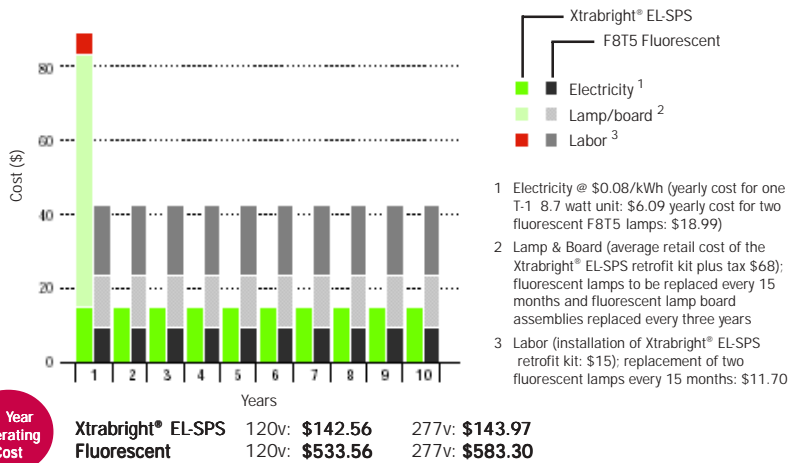
The safest exit sign is the one that's brightest. The Xtrabright® EL-SPS maintains the brightness of an original T-5 lit sign but will be safer because it will be lit at those times when T-5 lamps are typically burned out. Brighter and with a much higher contrast than new LED exit sign technology, signs with the Xtrabright® EL-SPS make it easier to see the way out in emergencies.

Lower cost

The economic decision to retrofit exit signs with fluorescent light sources is driven by three factors: material cost, labor, and annual energy costs.

The retrofit of a fluorescent edge-lit exit sign with a T-1® kit:

- Reduces operating costs by more than 75% over a 10 year period
- Provides full payback in about 18 months



Maintenance free

The long lasting T-1® light source eliminates maintenance labor and improves exit sign reliability. Install the Xtrabright® EL-SPS and walk away; its bright shine will remain far above UL standards for at least 10 years without any need for maintenance.

The T-1® Light Source Outshines All Others

A brighter white light that stays bright longer? That's the brilliance of the T-1® light technology. This unique cold cathode technology has no filaments to burn out and is exceptionally long lasting and effective in exit signs for at least 10 years. Upon installation, an edge-lit sign with our T-1® lamp system is significantly brighter than a standard new LED edge-lit sign. Even after normal degradation and maintenance free operation for a decade, a T-1® Lighting product will be brighter than a new LED exit sign.

Installation

T-1® Lighting's Xtrabright® EL-SPS is designed to fit the Lithonia Lighting Precise Collection LRP, LRP2, FRP, and F2RP edge-lit exit signs.

The enclosed mounting bracket is provided to allow the Xtrabright® EL-SPS to adjust to a variety of widths to fit virtually all other brands of edge-lit signs.

Installation is easy.

- 1 Simply remove the mounting plate from the cover can to release the panel assembly and lamp housing.
Disconnect and discard old lamp board assembly (LED or fluorescent).
- 2 Slide the Xtrabright® EL-SPS into the edge-lit lamp housing.
- 3 Attach power lead wires using wire nuts.
Reattach the mounting plate, panel assembly, and lamp housing to the cover can.
- 4 Mounting bracket.
- 5 Mounting bracket on Xtrabright® EL-SPS.

Features/Benefits

Exceptional brightness: exceeds Underwriters Laboratory 924 standards

Safer in emergencies: a brighter sign is easier to see

White light: even illumination for green or red lettering

Efficient light source technology: the high performance T-1® lamp

Saves energy: higher lumen-per-watt output than LED exit signs

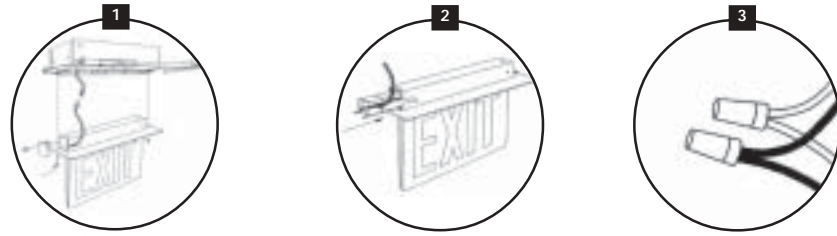
Maintenance free: provides stable, bright output for at least 10 years

Economical: costs 75% less to operate than fluorescent lamps

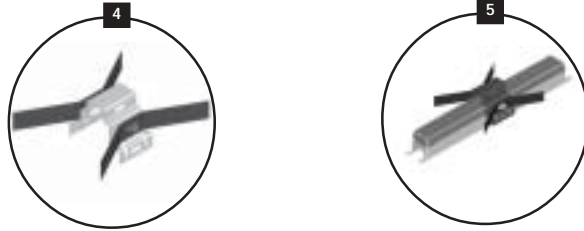
Payback in about 18 months: significant energy and maintenance cost savings

Single solution: no other universal energy efficient retrofits are available for edge-lit signs

Retrofitting Lithonia Precise Collection



Retrofitting with mounting bracket



For all installations, refer to installation instructions for details.

System Specifications: Xtrabright® EL-SPS

CATEGORY	DIMENSIONS
Dual Voltage* 120v / 277v	Product Dimensions: 13" x 1.65" x 1.3"
Wattage 4.4w / 4.8w	
Current 73mA / 51mA	
Light Source T-1®	
UL Compliant Life at least 10 years	
UL Classification EFS	
No. of Lamps/Unit Two	
Parallel Operation Yes	
Built in Surge Suppression Yes	

* Switching Power Supply allows operation from 100-300v AC and between 50-60 Hz.

Products

SKU	NAME	DESCRIPTION	VOLTAGE
Units per carton: 50			
21010	Xtrabright® EL-SPS	Edge-lit Retrofit Kit	120/277
64610	Alkco Bracket	Bracket for Alkco Edge-Glo® Exit	N/A
10096	SP 120-Relay	Dual Circuit Relay Module	120
10097	SP 277-Relay	Dual Circuit Relay Module	277



Exit Fixture Specific
E207839

**New York City Approved
Calendar #42399**



A DIVISION OF BJI ENERGY SOLUTIONS, LLC

www.T-1Lighting.com

888-733-6374

212-253-4248 fax

Warranty

Lamp and ballast shall be free from defects in material and workmanship five years from the date of manufacture. BJI Energy Solutions, LLC reserves the right to determine if the unit was defective, and that it was used in accordance with the Company's prescribed guidelines. Warranty will not be honored for a device which is opened or installed in situations not intended for installation. This warranty only covers replacement of defective components and BJI Energy Solutions, LLC is not responsible for losses beyond the actual product supplied.

This BJI Energy Solutions, LLC product is protected by US patent #6,471,388.

T-1 and Xtrabright are registered trademarks of BJI Energy Solutions, LLC.

All rights reserved.

All specifications and prices are subject to change without notice.